

# *Lighthouse Arts*


*Prefinished Wood Flooring  
Designs - Carvings*



*3D Convex Carvings  
&  
Shallow-Relief  
"Wood Floor Tattooing"*







*Every now and then a truly revolutionary innovation comes around that transforms the wood flooring industry. The development of prefinished wood flooring is one of those innovations. It has provided home owners and businesses with the convenience of bypassing the entire sanding and finishing procedure on the job site. However, this convenience has come at a price. Manufacturers of prefinished wood floors do not offer any design options. Therefore, if someone wanted a decorative border or medallion, they would either have to go with unfinished or go with another brand's prefinished design. The latter can be problematic in two ways: the products may not come together flush and/or the tongue and groove will not line up.*

*The latest cutting edge innovation in wood flooring – as represented in our “Prestige Prefinished Wood Flooring Designs” - solves this problem! Our state of the art shallow-relief carving technology makes it possible to have custom designs in any brand of prefinished wood flooring. The sub surface relief carving method produces a permanent design that is as durable as your floor. When you walk on the floor, you are walking on the “high spots” only, which is the original flooring. The design itself is slightly below the surface. We carefully hand seal and finish the design with high solids urethane or high solids penetrating-hardening oil for optimal protection.*

### *SHALLOW-RELIEF & 3D CARVING*

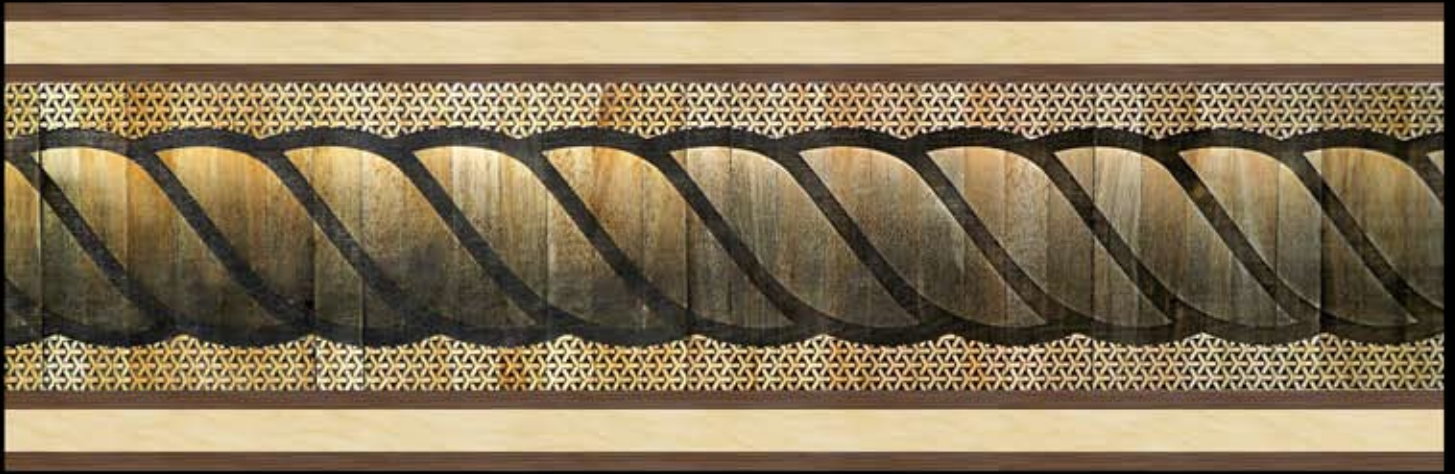
*We have 2 styles of carvings to complement the style of the flooring and the design. Our shallow-relief carving is a method by which we slightly recess the design just below the surface to a single depth. By contrast, our 3D carving technology is a multi-depth level process of introducing sculpted designs into the flooring. The latter brings amazing old world charm to any flooring, but most especially compliments hand-scraped, distressed and sculpted wood floors.*

*With our innovative processes, custom designs like beautiful borders, custom accents, company logos, medallions and much more can now be incorporated into any brand, color or species of prefinished wood flooring. The design possibilities are only limited by your imagination.*

*Lighthouse Arts*



# 3D Carvings / Sculpted Designs



*Rope. Inlaid, Carved & Gradient Shaded*



*"Polynesian Pebbles"*

*Top: light*

*Mid: sunburst*

*Bottom: stained*





*3D Carvings & Shallow Relief Etchings:  
Sculpted Wood Floor Borders*



*Vine 3D*



*Sumeria 3D*



*Grapes 3D*



*Celtic Chain*



*3D Carvings & Shallow Relief Etchings:*

# *Basket-Weave Pattern*



*Application Ideas:*

*Sculpted Flooring Border/Pattern,  
Table top, Cabinet Door, Stair Risers...*

---

*Lighthouse Arts*



*3D Carvings & Shallow Relief Etchings:  
Sculpted Wood Floor Borders*

Art Deco Style carving in a prefinished maple floor.



Charcoal gray floor / white border strip with maroon colored carving.





*3D Carvings & Shallow Relief Etchings:*

# *3D Leaves Parquet*



*Lighthouse Arts*



*Sculpted 3D Carvings may be used as:  
Borders / Patterns for Flooring,  
Table Top, Cabinet Doors, Stair Risers...  
(Scalable to any size.)*



*Rose*



*Diamonds*



*"Prestige" Shallow relief collection*

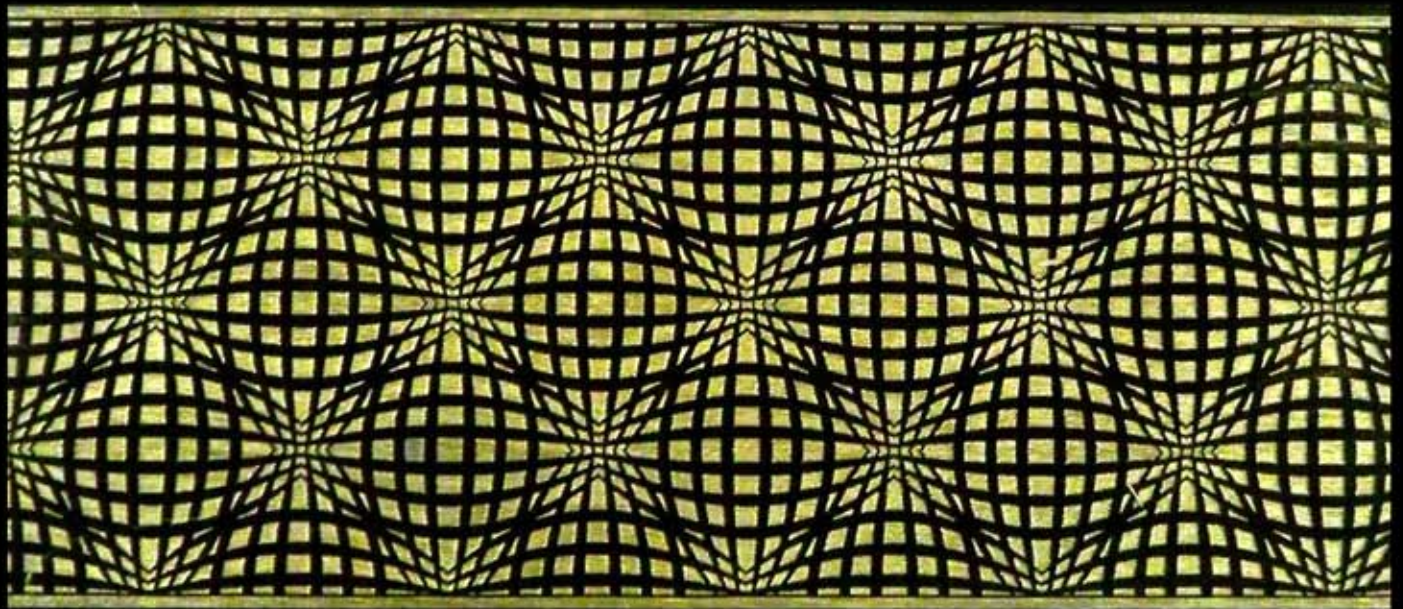
A  
R  
T  
E  
S  
I  
A  
N



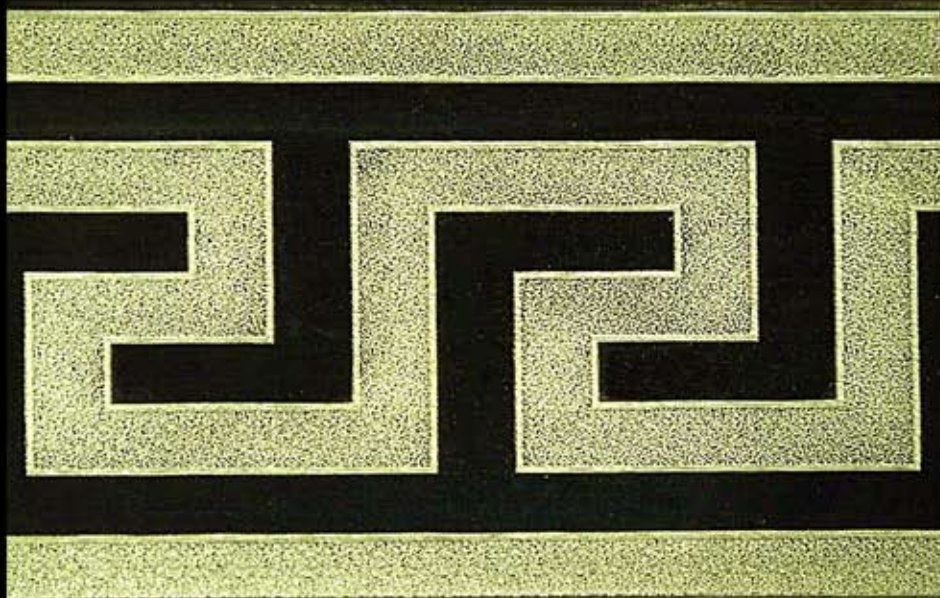
P  
O  
N  
D  
S







*Gold-Leaf filled  
shallow relief carvings.  
Colors can be customized.*



*Entire  
surface  
has a  
stunning  
texture!*





*Granada Brown*





*Granada Gold*  
*(shown on ebony color maple)*





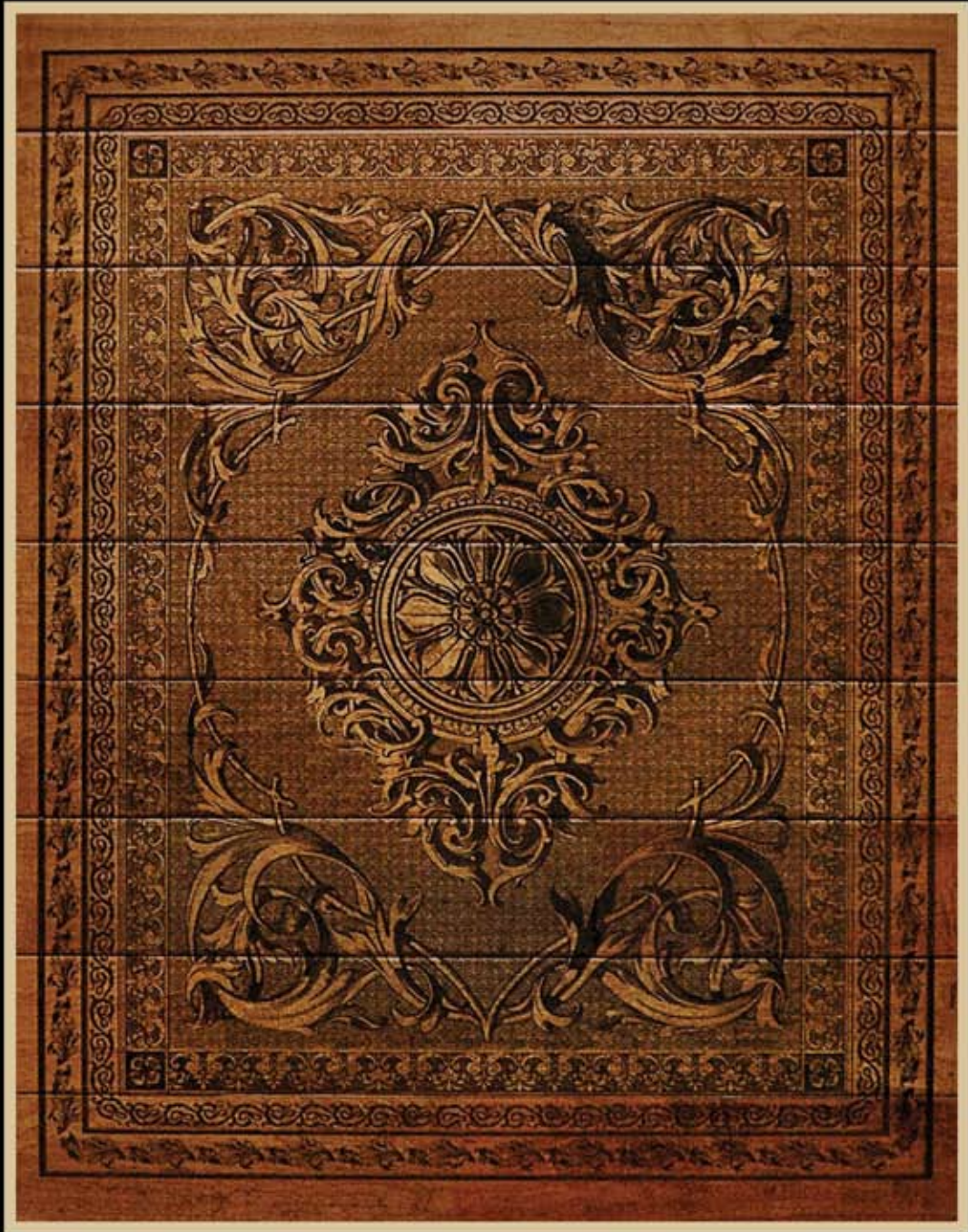
*Griffins*  
(shown on Brazilian Cherry)





*Griffins Reverse*





*Lancelot*





*Lancelot Reverse*

( Shown on ebony colored maple )





*Victorian Rug*





*Palermo*





*Oslo*





*Dundee*





# Borders

## FLORENCE

(SHOWN: GOLD  
ON BRAZILIAN CHERRY)



## GREEK KEY

(SHOWN: GOLD  
ON DARK BROWN MAPLE)



## VERDE

(SHOWN: DARK BROWN  
ON BRAZILIAN CHERRY)



## MODERN ROPE

(SHOWN: OFF-WHITE  
ON DARK BROWN MAPLE)



## REVERE

(SHOWN: DARK BROWN  
ON BRAZILIAN CHERRY)



## MADISON

(SHOWN: DARK BROWN  
ON HICKORY NATURAL)



## TRADITIONAL ROPE

(SHOWN: ANTIQUE CREME  
ON MEDIUM BROWN)



## CELTIC ROPE

(SHOWN: GOLD  
ON BLACK WALNUT)




## VEGAS

(SHOWN: SILVER  
ON EBONIZED MAPLE)







## FAQ:

*Q: Is this process done on site, if not, how can I get these designs on my next project?*

*A: All work is done in our studio. Simply ship some of the flooring to us prior to installation. We apply the design, then number the boards for ease of installation and ship it back to you. With certain brands and colors, it may be possible for us to get the material locally and then ship it to you. However, sometimes the same brand and color may be slightly different coming from two different batches. In those cases, it's best to ship to us from the same batch as the rest of the flooring.*

*Q: Will the carving create voids where dust, dirt and/or food can get caught?*

*A: The depth variation in our carving designs is often much less than the grout lines in an average tile floor, or the texture of a hand-scraped floor, textured tile floors or slate. These types of floors have been successfully used even in high-traffic locations.*

*Q: Can these carved areas be cleaned, and if so, how?*

*A: All areas are fully sealed and finished and can be easily cleaned just like the rest of the floor. Typically this means vacuuming and occasionally using a micro fiber mop with the proper cleaner recommended by the manufacturer of the flooring.*

*Q: Can these carved designs be sanded and refinished?*

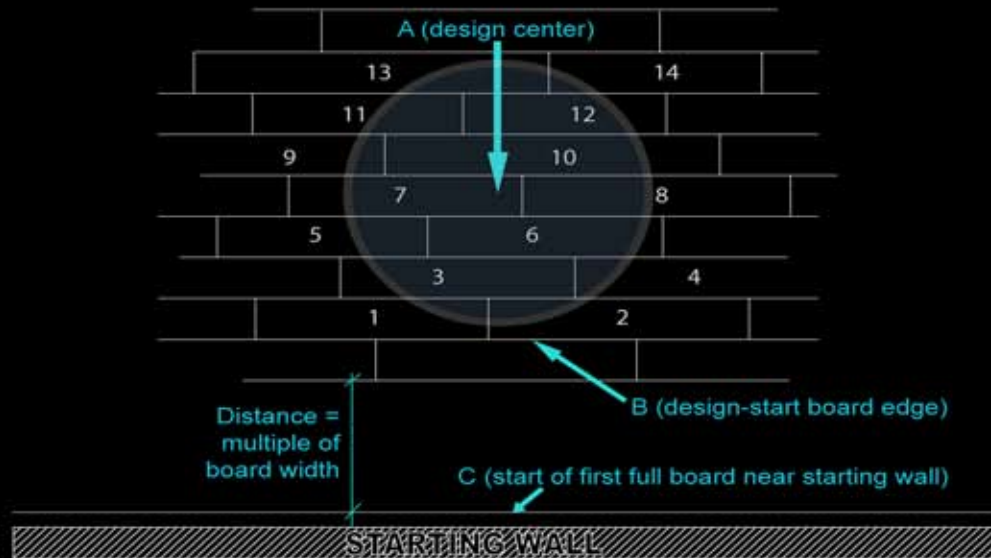
*A: The main reason consumers choose prefinished flooring is to avoid sanding and finishing. Typically these floors are warrantied for 20-30 years or more, so this is a non-issue for a very long time. However, if and when sanding will be needed, most of our designs can be sanded once if a professional floor sander exercises proper care and technique. If the sanding is too deep, it may remove the design and replacement will be necessary.*

*Q: What happens if the carving gets damaged in one area? Is it possible to replace only one or 2 boards in the design?*

*A: Yes, we can generally reproduce those sections only. You will need to supply us with new flooring board(s) that will match the existing flooring.*



# “FREE-FLOW” MEDALLION / CUSTOM ACCENT INSTALLATION



## INSTALLATION STARTING FROM WALL (STANDARD)

- 1: Establish where the center of design should be in relation to the room (A)
- 2: Temporarily dry assemble design.
- 3: Find where the edge of the first row would be that contains the start of the design (mark B)
- 4: Measure back to starting wall where the first FULL board would fit (C). For example, if the distance between the “design start board edge” (mark B) and the starting wall is 82 inches, and the boards are 5 inches wide, then a line should be marked at 80 inches from mark (B) or 2 inches from wall.
- 5: Screw a temporary guide or scrap piece of wood along this line.
- 6: Begin installation against this temporary guide and backfill later.
- 7: When “design start board edge” (B) is reached, position the dry assembled design exactly where it should be and establish exact position of board #1.
- 8: Install numbered boards #1 and any other additional numbered boards in this row. (In this example boards #1 & #2)
- 9: Finish installation of first row to left and right, working left & right away from design already installed.
- 10: Next row: first install numbered boards in 2nd row (#3 & #4 in this example) lining up the design carefully with the design on the previous row. Finish installation of row 2 away from design same as in row 1.
- 11: Proceed with all remaining rows in the same fashion, carefully making sure design is perfectly aligned.

## INSTALLATION STARTING FROM DESIGN (ALTERNATE)

- 1: Establish where the center of design should be in relation to the room (A)
  - 2: Temporarily dry assemble design.
  - 3: Find where the edge of the first row would be that contains the start of the design (mark B)
  - 4: Install temporary guide against this line.
  - 5: Position the dry assembled design exactly where it should be and establish exact position of board #1
- PROCEED WITH STEPS #8 - #11 ABOVE. THEN, TO INSTALL FROM THE START OF THE DESIGN, INSTALL SLIP TONGUE TO TURN INSTALLATION DIRECTION AND INSTALL AS USUAL.

## BORDER INSTALLATION

Round up/down length of border side to multiple of board widths in the field to avoid having to cut last board in field.



Install these boards from R to L, using factory tongue to attach to groove in border side.

TEMPORARY GUIDE

- 1: Establish exact layout for border
- 2: Nail down a temporary guide as shown
- 3: Install “bottom” border row against guide, tongue facing field
- 4: Install L side of border with tongue facing field, cutting it to exact length (tip: cut last piece when last row of field is installed for perfect alignment)
- 5: Install field. L end is factory t&g to L border, but right end of field rows need to be cut to meet border (R). Gently hand sand cut edge to mimic bevel and apply stain to best match color.
- 6: When border / field installation is complete, reverse installation with a slip tongue to “bottom border” and finish installation as usual.